

Overview of National Wild Pig Working Groups

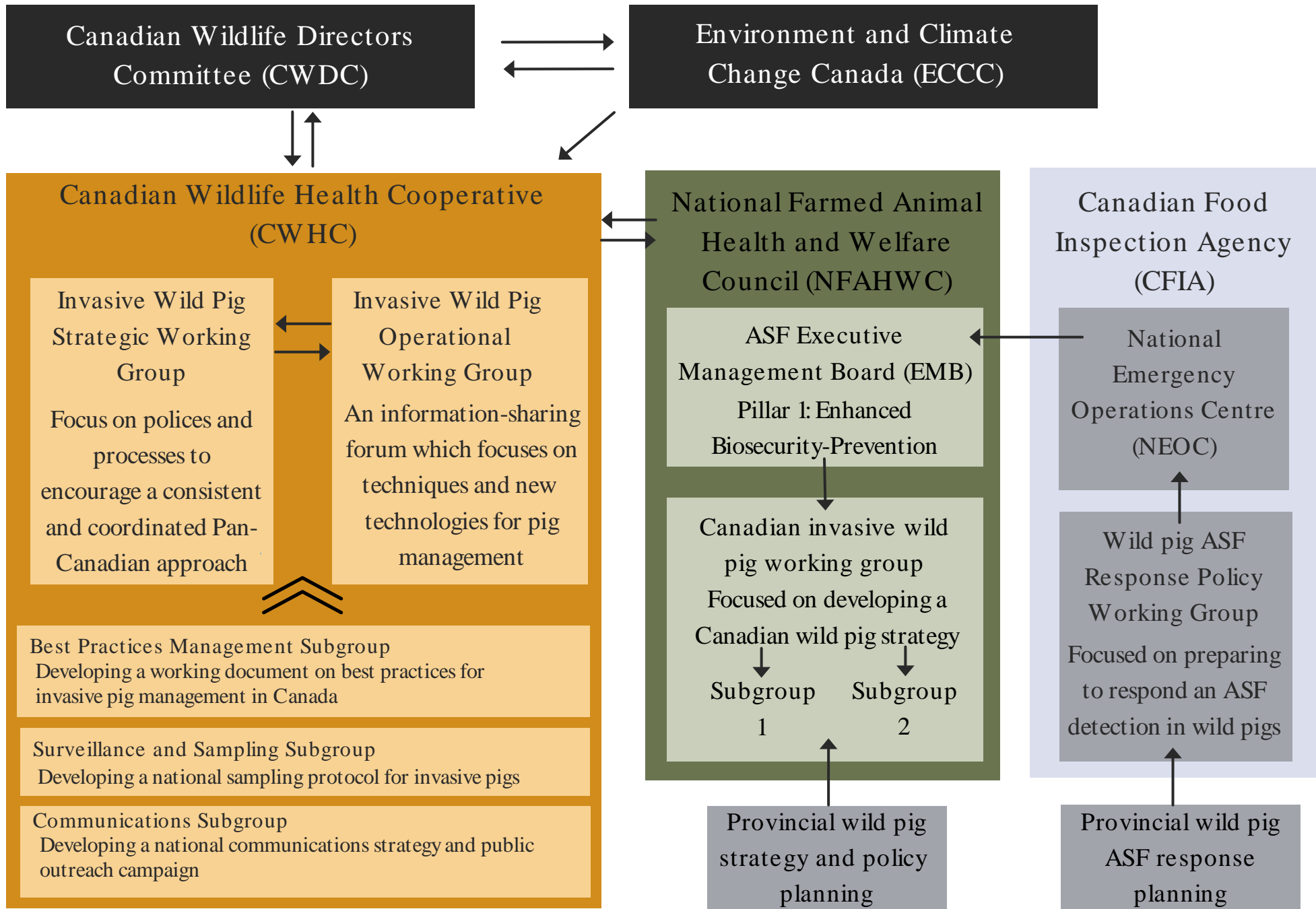
Highlighting connections to the African Swine Fever Executive Management Board (ASF EMB)



Christa Arsenault, DVM, National ASF
Coordinator
CPC African Swine Fever Townhall Meeting
September 29th, 2021

Prepared by the National Farmed Animal Health and Welfare Council (NFAHWC)

Wild Pig Working Groups In Canada- Organizational Chart





CANADIAN
WILDLIFE HEALTH
COOPERATIVE

CREATING A WORLD
THAT IS SAFE AND SUSTAINABLE
FOR WILDLIFE AND SOCIETY



CANADIAN INVASIVE PIG PROJECT

Marnie Zimmer

WHAT WE ARE DOING:

In order to help facilitate knowledge sharing and coordinate mitigation efforts across Canada, Environment and Climate Change Canada (ECCC) has supported the Canadian Wildlife Health Cooperative (CWHC) to chair and lead a project that supports the first National Working Groups for invasive pigs in Canada.

The overarching goal of the project is to facilitate an action agenda to prevent and mitigate social and ecological harm of invasive boar and pigs in Canada.



Photo courtesy of Travis Black, CO Parks & Wildlife

WHAT WE ARE DOING:



- Started by doing a jurisdictional scan (scan of each province/territory) on invasive wild pig programs across Canada.
 - Determined that there are various stages of programs in the different jurisdictions; some being focused on education and outreach while others are focused on control and eradication.
 - This information allowed us to formulate two working groups: the strategic and the operational.



STRATEGIC GROUP



So far:

- The CWHC has developed and will maintain a website on invasive wild pigs with recent publications and resources for jurisdictions as well as reporting information for the general public. http://www.cwhc-rcsf.ca/invasive_pigs.php

STRATEGIC GROUP

So far:

- Hosted and moderated a panel with experts from the United States Department of Agriculture (USDA) National Feral Swine Damage Management Program in September 2020.
- Discussion topics included disease surveillance, management and control programs as well as communications and outreach.

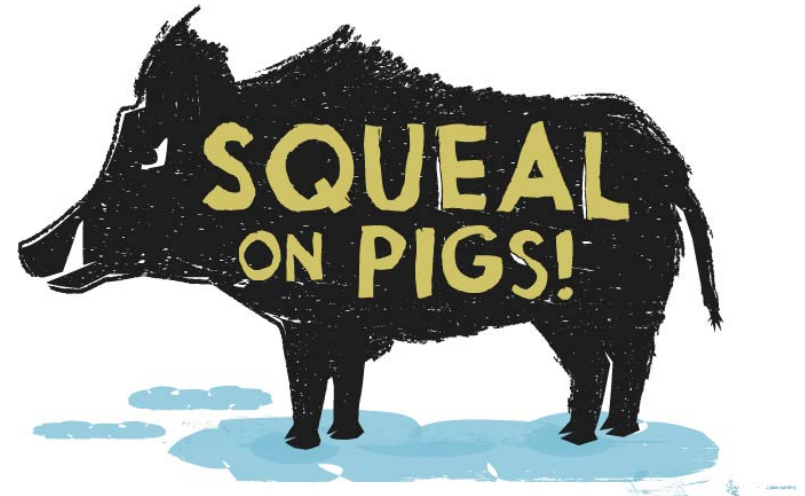


Manage the Damage
Stop Feral Swine

STRATEGIC GROUP

So far:

- Formation of a Communications sub-group that developed a national communications and public outreach campaign.
 - Focus will be on specific days and/or weeks to amplify awareness messaging through social media. Example World Water Day social media posts on the impact on wetlands and water bodies by invasive wild pigs.



STRATEGIC GROUP



So far:

- Creation of a Disease Surveillance Sub-Group with members from both the Strategic and Operational Working groups.
 - The group has been tasked with developing a national sampling protocol for invasive wild pigs and the establishment of a central tissue repository. If implemented, the tissue repository would store samples that would be available for agencies and/or researchers to support research and validation of tests.

STRATEGIC GROUP

So far:

- Creation of a Best Practices Management sub-group with members from both the strategic and operational groups.
 - Develop a working document on best practices for invasive wild pig management in Canada.



Photo courtesy of Perry Abramenko, Alberta Agriculture and Rural Development

OPERATIONAL GROUP



Consists of representatives from different jurisdictions from across Canada.

The objectives of this working group:

- This is a forum where representatives from different jurisdictions can share technical information about invasive pig programs including what worked and didn't, financial burden and where to start.
- Key knowledge holders and guest speakers, not on the working group were identified and invited to present, answered questions, and provided advice to the group.

Questions?

Contact Information:

Christa Arsenault- carsenault@ahwcouncil.ca

Marnie Zimmer- mzimmer@cwahc-rscf.ca



CANADIAN
WILDLIFE HEALTH
COOPERATIVE